



Sunne Savage Gallery

135 Cambridge Street

Winchester, MA 01890

781.721.2410

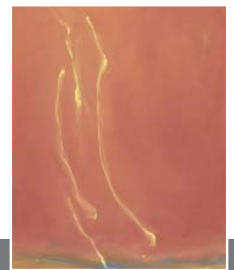
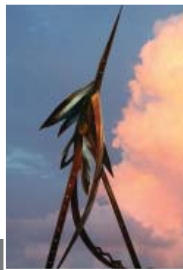
www.sunnesavage.com

Gillian Christy
American Dreams, 2007

Stainless Steel, 156 x 60 x 48 inches



Sunne Savage Gallery is participating in AD 20/21 April 8-11, 2010



Booth 20
AD 20/21
The Cyclorama Building
539 Tremont Street
Boston, MA
www.ad2021.com

Exhibiting Artists:

Elizabeth Ahern
John Bisbee
Gillian Christy
Rockwell Kent
Marsden Hartley
John Marin
Robert S. Neuman
John Raimondi
John Thompson
William Thon